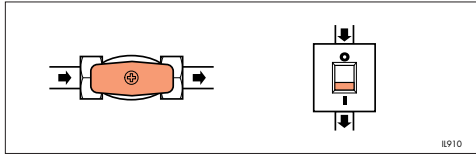


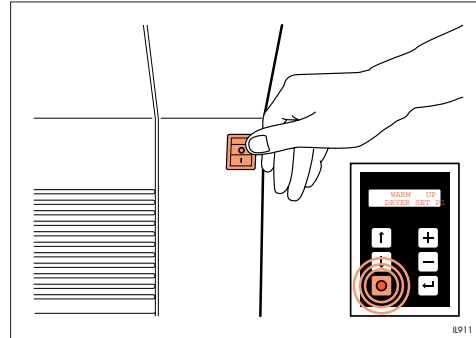
ILFOLAB MG2950 SIMPLIFIED INSTRUCTIONS

OPERATING

USING THE PROCESSOR



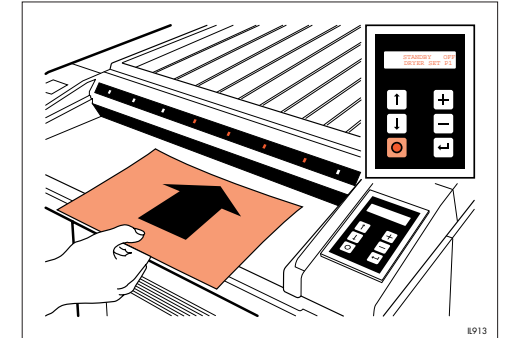
1 Turn on the water and electrical supplies to the processor.



2 Switch the processor on. The display reads **W A R M U P** and the ready LED flashes, indicating the processor is **not** ready.

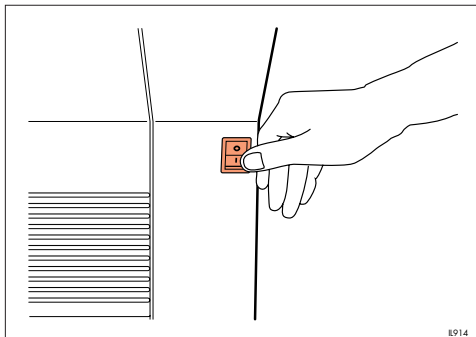


3 Check the required dryer program has been selected (see section 2.5c).

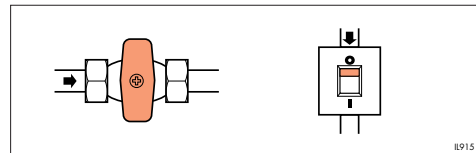


4 When the display reads **STANDBY OFF** and the ready LED is steady on, the processor is ready for use. Feed sheets emulsion side down.

SWITCHING OFF



1 Switch the processor off.



2 Turn off the electrical supply then the water supply to the processor.

MAINTENANCE CHECKLIST

Daily maintenance

Check the water and electrical supplies are on
Clean the rollers by processing a few sheets of unfogged paper
Clean the feed tray
Add 12ml (0.4 US fl oz) to wash tank at the end of each day

Weekly maintenance

Clean the processing racks
Check rollers and guides for damage
Check for algae in wash tank and spray bar

Six monthly maintenance

Drain and clean the processing tanks
Check operation of smoke detector